

Opportunities to sponsor Gunung Bagging's 2014 Borneo Expeditions

Gunung Bagging

CLIMBING THE MOUNTAINS OF INDONESIA

SEARCH

Search

[Home](#) [Inspiration](#) [Resources](#) [Methods](#)

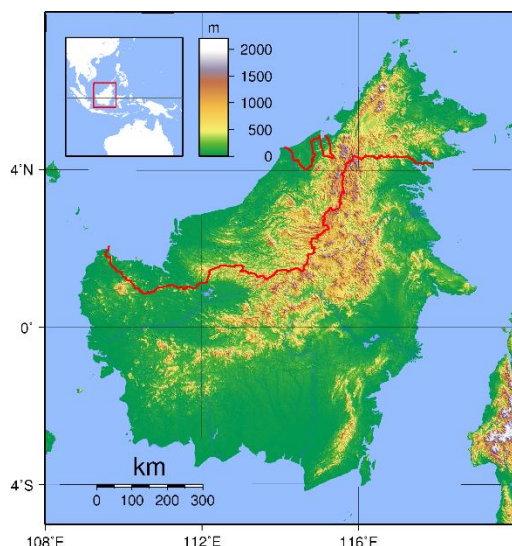
[Prominence](#) [Hall of Fame](#) [Contact Us](#) [Donate](#)

// home

2014 Borneo Expeditions Itinerary

SEPTEMBER 2014

Arrive in Sarawak, Malaysian Borneo. Travel to **Gunung Mulu** National Park for the 4-day trek to the summit and back. Then to nearby **Gunung Murud**, at 2,423m the highest mountain in Sarawak and also supposedly a 4-day expedition. The third mountain on the itinerary is a very mysterious one indeed.



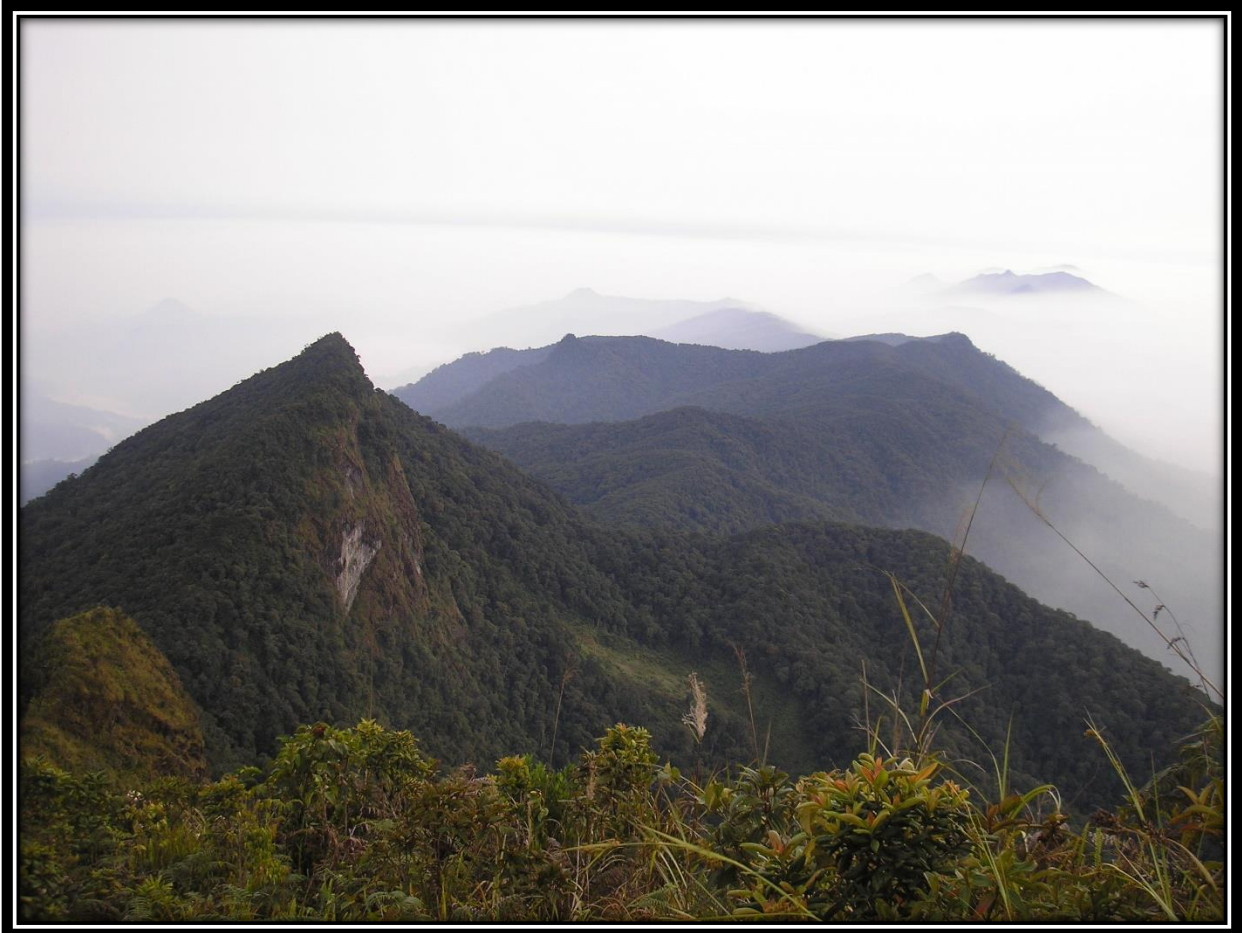
There is almost no information on **Bukit Batu** in central Sarawak, despite its great prominence. Several boat journeys in the interior are likely to be required. Local contacts are currently making enquiries with village leaders about this mountain. Next is a long ridge on the border of Indonesia and Malaysia. It is known as **Mount Pueh** to Malaysians and **Gunung Rumput/Berumput** to Indonesians. Again, there is little to no information available online regarding the ascent though it is likely a local hunters' trail does exist. **Penrissen** is more easily accessible and offers views of remote areas of West Kalimantan.

OCTOBER 2014

The next mountain on the itinerary is **Bukit Raya** (2,300m) – the highest in Kalimantan and requiring a 10-day return journey within the Bukit Baka Bukit Raya National Park. Next on the agenda is **Gunung Cabang**, the highest peak of the remote Karimata island off the west coast of West Kalimantan. This is followed by, hopefully, a rare ascent of **Gunung Palung** (subject to permission from the National Park) and then a photography trip to the incredible **Batu Daya** cliffs. Returning to the northern part of West Kalimantan province, **Gunung Niut** is next on the itinerary, one of Kalimantan's most prominent peaks.

Neighbouring **Gunung Merdai** is a very mysterious one, with absolutely no information available at present.

On completion of the *Borneo Expeditions* we will be updating the many pages on the Gunung Bagging website with trip reports, photos, GPS tracks, logistical recommendations, and local guide contact numbers so that our readers can explore these mountains much more easily and safely than before. We will also be offering talks on the expeditions and making available our reports to local tourism authorities in both Sarawak and West Kalimantan for their free use.



Near the summit of Gunung Besar (Halau-halau), South Kalimantan, Indonesian Borneo (Dan Quinn, 2010)

How Can You Support Gunung Bagging?

Gunung Bagging asks for sponsorship support for this important and pioneering expedition work, visiting and documenting the mountains and helping to develop eco-tourism in remote parts of Indonesia and neighbouring countries.

We need 4000 USD to cover the costs of the *2014 Borneo Expeditions*.

Donated money all goes towards the expeditions – transportation costs, basic accommodation when necessary, the payment of local guides, and simple food. If we have any funds left at the end of the *2014 Borneo Expeditions* it will go towards further Gunung Bagging expeditions in 2015.

Benefits of Support

If you become a Gunung Bagging *2014 Borneo Expeditions* sponsor, there is a range of benefits:

- Logo and/or name on the Gunung Bagging homepage and the specific expedition pages that your funds supported. *2014 Borneo Expeditions* proudly supported by YOU.
- Acknowledgement for your support by social media, including Facebook, Twitter, and LinkedIn. We will like your Facebook page and post our thanks for your support.
- For those donating \$500 or more, a presentation on the *Borneo Expeditions* by Gunung Bagging founder, Daniel Quinn, in early 2015. Make your next event something to remember.
- Opportunity to join some of the expeditions, although these adventures are not for everyone!



Dan Quinn on Gunung Rantemario, Sulawesi (Don Bason, 2009)

If you are not able to help by donating, there are other ways you can support us and see the above plan become a reality. Let your friends and colleagues know. Forward them this information. They might be able to help.

Our provisional deadline for raising funds is April 30th but these expeditions will go ahead regardless of funding. If you have any questions about the expeditions that are not

answered above, or are interested in becoming a sponsor, we would be delighted to hear from you.

Dan Quinn, April 2014.

Email: Danpquinn@gmail.com

Online References

<http://www.gunungbagging.com>

<http://www.thejakartapost.com/news/2009/12/06/climb-ev039ry-mountain.html>

<http://indonesiaexpat.biz/travel/climbing-the-less-well-known-peaks-of-indonesia/>

<http://www.thejakartaglobe.com/archive/my-jakarta-dan-quinn-mountain-climber/>

<http://www.peakbagger.com/list.aspx?lid=448>

<http://picasaweb.google.com/Gunungbagging>

<http://thequietus.com/articles/02055-in-pursuit-of-marilyn-the-unusual-hobby-of-hill-bagging>

<http://ninestandards.com/bledug-kuwu-image-gallery/>